



*cedars*  
Centre of Development and Resources for Students  
The University of Hong Kong  
香港大學學生發展及資源中心

# A GLIMPSE OF STUDENT LIFE @ HKU

## FOR PROSPECTIVE STUDENTS 2020-21



# Contents

- 3 Welcome
- 4 Must-know Facts of HKU
- 5 Introducing the Centre of Development and Resources for Students (CEDARS)
- 6 Academic and Admission Matters
- 7 Finances
- 10 Students Under 18
- 11 Equality, Diversity and Sustainability
- 13 Smoke-free Campus
- 14 Campus Facilities
- 22 Student Support and Resources
- 26 Student Life @HKU
- 28 Crisis and Emergency
- 31 Information for Non-local Students
- 37 Campus Maps



While you are considering to study at The University of Hong Kong (HKU), we would like to provide you with more information about our university – the oldest of all universities in a unique territory.

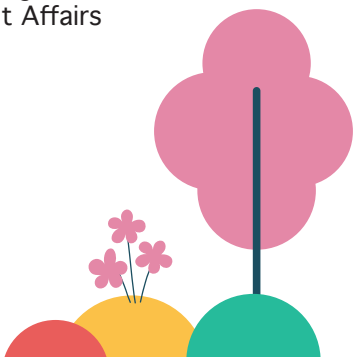
HKU considers university education as a total learning experience and HKU has much to offer, both academically and culturally. Our goal is to help students acquire the experience that can benefit you lifelong. Towards this goal, the Centre of Development and Resources for Students (CEDARS) together with other units provide all the support that one may need. You are welcome to find out more about the wide range of services and the varied resources available on campus. Even before you become a student here, this booklet will provide a glimpse of how life is like being a student at HKU.

We look forward to working with you to facilitate developing the rewarding total experience.

A handwritten signature in black ink, appearing to read 'Eugenie Leung'.

Dr. Eugenie Leung  
Dean of Student Affairs

October 2019





# Must-know Facts of HKU

Founded in 1911, HKU is the oldest tertiary institution in Hong Kong. With a population of over 29,000 students, there are over 9,000 overseas students enrolled from about 100 countries in 2017/18.

HKU is a comprehensive university. It offers a wide spectrum of high quality programmes with an emphasis on encouraging a flexible approach to studies.

HKU received well-deserved recognition from prestigious global institutions. It ranked 1<sup>st</sup> in Hong Kong<sup>1</sup>, 2<sup>nd</sup> in Asia<sup>2</sup>, 25<sup>th</sup> in the world<sup>3</sup>, 1<sup>st</sup> in Hong Kong for Best Global Universities<sup>4</sup> and 1<sup>st</sup> most International University in the World<sup>5</sup>.

<sup>1</sup> THE World University Rankings 2020

<sup>2</sup> QS Asia University Rankings 2019

<sup>3</sup> QS World University Rankings 2020

<sup>4</sup> US News 2019

<sup>5</sup> THE Most International Universities in the World 2019

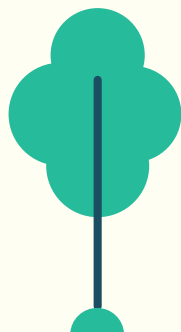
HKU prides itself on its international community of students and staff, providing a vibrant, colourful campus life for everyone. Some 144 countries have been represented in the student body since 2000, with new ones added every year. Students can enjoy an international experience not just within the university but also through HKU's myriad of worldwide exchange programmes, summer schools and international internship opportunities.

Learn more: [www.hku.hk](http://www.hku.hk)





# Introducing the Centre of Development and Resources for Students (CEDARS)



The Centre of Development and Resources for Students (CEDARS) is committed to fostering an intellectually stimulating and culturally diverse campus to enrich students' total learning experience at HKU. Bridging the boundary between classroom and the world, we provide support services, resources and educational programmes to facilitate students' learning.

Cedars are ornamental trees with durably scented wood and evergreen leaves; they signify growth, development and shelter which are the goals of our work for students. At CEDARS, we hope to nurture students with a durable scent of the intellect so that they are forever young and fresh.

As the one-stop student service and resources centre, and co-curricular learning hub, CEDARS comprises of three Sections and two Programme Teams to provide comprehensive student services such as housing, financial support, visa matters, employment preparation, professional counselling, SEN support as well as a spectrum of co-curricular learning and service opportunities.

- Campus Life Section
- Careers and Placement Section
- Counselling and Person Enrichment Section
- Student Development Team
- General Education Team



## **CEDARS**

Website: [www.cedars.hku.hk](http://www.cedars.hku.hk)

Facebook: [facebook.com/hku.cedars](https://facebook.com/hku.cedars)

Instagram: @hku.cedars

# Academic and Admission Matters

There are a variety of courses and programmes for students to enjoy an academic experience at HKU. Apart from studies, students gain internship experiences, personal and professional networks, and exciting exposure to the vibrant city life. Students interested in applying to our programmes can obtain detailed information at the following websites:

1. **Undergraduate programmes:** [aal.hku.hk/admissions](http://aal.hku.hk/admissions)
2. **Taught postgraduate programmes:** [aal.hku.hk/tpg](http://aal.hku.hk/tpg)
3. **Summer programmes:** [aal.hku.hk/summer](http://aal.hku.hk/summer)
4. **Others – Exchange and visiting programmes:** [aal.hku.hk/studyabroad](http://aal.hku.hk/studyabroad)

**Admissions Office** - Admissions and Academic Liaison Section

Address: MB14, G/F, Main Building, The University of Hong Kong, Pokfulam, Hong Kong

Email: [admissions@hku.hk](mailto:admissions@hku.hk) (undergraduate admissions)  
[prcu@hku.hk](mailto:prcu@hku.hk) (admissions of undergraduate students from the Mainland)  
[tpgadmissions@hku.hk](mailto:tpgadmissions@hku.hk) (taught postgraduate admissions)

## 5. **Research postgraduate programmes**

With its distinguished excellence in research and outstanding performance in teaching, HKU attracts first-class teaching and research staff and brilliant students from around the world.

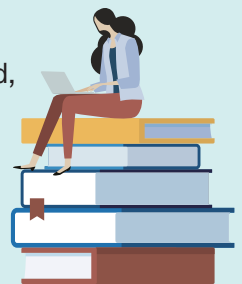
A detailed guide to prospective students is available at [www.gradsch.hku.hk/gradsch/](http://www.gradsch.hku.hk/gradsch/).

Applicants can also obtain detailed information at FAQ: [www.gradsch.hku.hk/gradsch/faq](http://www.gradsch.hku.hk/gradsch/faq).

## **Graduate School**

Address: Room P403, Graduate House,  
The University of Hong Kong, Pokfulam Road,  
Hong Kong

Email: [gradsch@hku.hk](mailto:gradsch@hku.hk)



# Finances



## Budget

You may consider the following items in your budget planning. The fees and charges stated below are based on those of the year of 2019/20 only. **The actual costs will increase for the year of 2020/21.**

Major expenditure (in HK dollar)		
Items	Undergraduate Students	Postgraduate Students
<b>Academic Expenses</b>		
Tuition fees	\$42,100 p.a.* (for local students) / \$164,000 p.a.* (for non-local students)  *This is for UGC-funded programmes only. For self-financing courses, the fees vary from programme to programme.	For students of taught courses, you need to check the tuition fees with the Faculty Office as fees vary from programme to programme.  For research students: \$42,100 p.a.
Caution money and other expenses	\$350 Caution money + \$240 Students' Union Fees	\$350 Caution money
Books and supplies (excluding personal computers & accessories)	Around \$7,700 - \$37,000 p.a.  Some courses also incur significant expenses relating to overseas field trips and special equipment.	Around \$9,800 - \$48,000 p.a.

For the updated fees and charges, please refer to the student handbooks as follows:

Undergraduate:

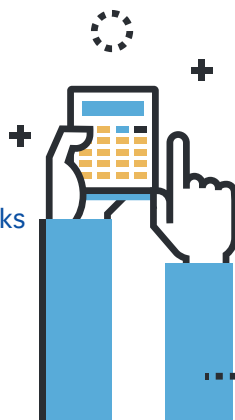
[www.handbook.hku.hk/ug](http://www.handbook.hku.hk/ug)

Taught Postgraduate:

[www.handbook.hku.hk/tpg](http://www.handbook.hku.hk/tpg)

Research Postgraduate:

[www.gradsch.hku.hk/gradsch/current-students/handbooks](http://www.gradsch.hku.hk/gradsch/current-students/handbooks)



Items		Undergraduate Students	Postgraduate Students
<b>Housing Expenses</b>			
University's residential halls & colleges	Lodging fees	\$15,000 - \$29,000 p.a. (285 residential days)	\$18,000 - \$63,000 p.a.
	Hall miscellaneous charges	\$1,600 - \$3,000 p.a.	These expenses include hall association entrance and subscription fees, high table dinner fees, key deposits, etc., excluding air-conditioning charge which varies with individual lifestyle and seasons (approximately \$200 per month in summer).
	Compulsory hall meal charges	\$9,000 - \$13,000 p.a. (not all meals are covered)	
University-administered non-hall housing	Lodging fees	\$15,000 p.a. - \$60,000 p.a.	
Privately rented accommodation	Lodging fees	Single room from \$50 per sq.ft. up, excluding utilities	
<b>Other Expenses</b>			
Food, groceries and transportation		Around \$5,000 per month up (depending on your lifestyles and if you go grocery shopping around the campus)	
Other personal expenses		You also need to budget for your entertainment, overseas travel, insurance and medical expenses, etc.	

The following tables give you some reference figures on common meal and transportation items:

### Meal Expenses (on-campus outlets)

Items	Average Spending Per Meal / Purchase (HK\$)
Breakfast	20 – 70
Lunch	25 – 75
Afternoon Tea	20 – 50
Dinner	30 – 90
Sandwiches	15 – 45
Bakeries	8 – 30
Salads	25 – 50
Hot Beverages / Coffee	8 – 40
Cold Beverages / Coffee	10 – 45
Snacks	8 – 25



**Note:**

- For your reference, a student typically spends about \$100 to \$120 per day on food.
- Apart from Ricci Hall, St. John's College and University Hall, there is currently no meal plan available at on-campus eateries.
- The above costs are for reference only and are subject to change.

## Transportation Cost

Frequent routes	Fare per ride (HK\$)	Means of public transport
Sassoon Road to Main Campus	2 - 7	By University shuttle bus
	5 - 11	By bus or minibus
Main Campus to Central	5 - 11	By bus or MTR
Main Campus to Causeway Bay	7 - 11	By bus, minibus or MTR
Main Campus to Mongkok	11 - 15	By bus, minibus or MTR

## Financial Resources



HKU provides financial resources, such as financial assistance and scholarships to students. Eligible students are welcome to apply for them. For more details, please visit [cedars.hku.hk/cedars-financial-resources](https://cedars.hku.hk/cedars-financial-resources).

### Government Financial Assistance (for local students only)

Eligible local students who need financial support to their university studies are encouraged to apply for the Tertiary Student Finance Scheme and the Non-means Tested Loan Scheme administered by the Student Finance Office of the HKSAR Government. Information is available at [cedars.hku.hk/finance/govt.html](https://cedars.hku.hk/finance/govt.html).

### University Financial Assistance (for local students only)

University funds, available to local students, are in general used to supplement Government Grants and Loans. For more details, please visit [cedars.hku.hk/finance/ufa.html](https://cedars.hku.hk/finance/ufa.html).



## Scholarships

Postgraduate scholarships are available for eligible students pursuing an M.Phil. or a Ph.D. degree. Further information is obtainable from the website of Graduate School at [www.gradsch.hku.hk](https://www.gradsch.hku.hk).

Students applying for undergraduate admissions will be considered for entrance scholarships when they submit applications to HKU. The result will be announced at the same time when students receive an offer of admission. No separate application is required. For updated information, please visit [www.aal.hku.hk/admissions](https://www.aal.hku.hk/admissions).

Students may also apply for other scholarships after they are admitted to HKU. For other HKU scholarship opportunities, please visit [www.scholarships.hku.hk](https://www.scholarships.hku.hk).

# Students Under 18



You may still be under the age of 18 at the time of admission to HKU. In this case, your parent/guardian is required to sign a consent form, without which the University may have difficulty in arranging some of the teaching and learning activities, and accommodation for you.

You will be generally treated as an adult and are expected to lead your academic and social lives in HKU as other students do. The University will correspond directly with you, but not your parent/guardian, on things related to you such as course enrollment, payment status of fees, academic status, results and grades, etc. Your parent/guardian will only be contacted in emergency or other situations where potential risks are involved.



Things to note:

## 1. Housing

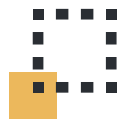
If you are in need of student housing and are successful in your application, you will only be housed in University's student residences such as Halls, Non-halls and the Residential Colleges.

## 2. Banking arrangement

Students under 18 must be accompanied in person by their parent(s) or legal guardian to open a bank account at one of the local banks. The University is not able to act as your guardian in this context.

For non-local students, please refer to p.36 for more details.

# Equality, Diversity and Sustainability



## Equal Opportunities

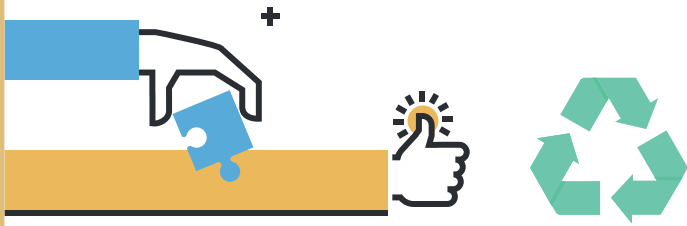
HKU is committed to creating, promoting and maintaining an environment which provides equality of opportunity, and which is free of any discrimination and harassment. The Equal Opportunity Unit assists the University in achieving the aforementioned goal by enhancing the sensitivity of the students and staff, handling discrimination/harassment complaints and enquiries, identifying and recommending changes to policies/practices in line with the University's equal opportunity policy. To learn more, please visit [www.eounit.hku.hk](http://www.eounit.hku.hk).

## Handling Discrimination / Harassment Complaints

The University's equal opportunity policy forbids discrimination/harassment in activities carried out in the course of employment, education, provision of goods and services, or other activities organised by the offices of the University. Procedures for handling complaints of discrimination and harassment can be found on the webpage of the Equal Opportunity Unit at [www.eounit.hku.hk/en/complaints-enquiries/procedures](http://www.eounit.hku.hk/en/complaints-enquiries/procedures).

## Parenting Needs

Facilities such as washrooms with baby-changing table at amenities centres, and baby care rooms on Main Campus, Centennial Campus and Sassoon Road Campus are available to parent students during their time on campus. For more information, please visit [cedars.hku.hk/campuslife/student-amenities/baby-care-rooms](http://cedars.hku.hk/campuslife/student-amenities/baby-care-rooms).



## Religious Needs

The halal food corner is not merely a catering space for the Muslim community on campus, it is also a platform for promotion of cultural diversity and interaction among University members. A multi-faith prayer room is also available on 1/F of Fong Shu Chuen Amenities Centre for use by students and staff members. It offers an option for those who are in need of special praying venue during the day.

## Sustainability

The Sustainability Office works to collaboratively develop, strengthen, and realise HKU's institutional vision, commitments, and goals to integrate principles of sustainability into all aspects of the University's facilities, operations, and activities.

The University's Policy on disposable plastic bottles aims to eliminate the sale and distribution of all disposable plastic water bottles of one litre or less in volume at all University catering and retail outlets, vending machines, and events.

Disposable plastic straws are not distributed at campus catering outlets as well. HKU seeks to be a leader in reducing disposable plastics. To do this, we are working to become a disposable plastic free campus by September 2020. We will work to reduce disposable plastic food service ware, bottles, and banners. For further information on the sustainability efforts of the University, please visit [www.sustainability.hku.hk](http://www.sustainability.hku.hk).







# Smoke-free Campus

HKU is a smoke-free campus.  
Smoking is not allowed on campus,  
both indoors and outdoors.



# Campus Facilities

## Amenities Centres



CEDARS manages three amenities centres ([cedars.hku.hk/campuslife/student-amenities](https://cedars.hku.hk/campuslife/student-amenities)). The facilities are open for use by students and staff as individuals or groups. Some facilities can be booked online for exclusive use.

### Chong Yuet Ming Amenities Centre

Email: [cymac@hku.hk](mailto:cymac@hku.hk)

Website: [cedars.hku.hk/campuslife/student-amenities/CYMAC](https://cedars.hku.hk/campuslife/student-amenities/CYMAC)

Multi-purpose room, meeting rooms, music rooms, baby care room, shower rooms, exhibition counters, banner sites, student society rooms, supermarket, cafeteria, restaurant

### Fong Shu Chuen Amenities Centre

Email: [fscac@hku.hk](mailto:fscac@hku.hk)

Website: [cedars.hku.hk/campuslife/student-amenities/FSCAC](https://cedars.hku.hk/campuslife/student-amenities/FSCAC)

Multi-purpose rooms, meeting rooms, party room, music rooms, prayer room, lounge, student society rooms, banner site, vCave, restaurant

### Pokfulam Amenities Centre

Email: [pflac@hku.hk](mailto:pflac@hku.hk)

Website: [wp2.cedars.hku.hk/nonhall](https://wp2.cedars.hku.hk/nonhall)

Music room, games room, baby care room, assembly hall/lobby, photocopying corner



## Chong Yuet Ming Cultural Centre

Chong Yuet Ming Cultural Centre (CYMCC), managed by CEDARS, is located on 3/F to 5/F above the Chong Yuet Ming Amenities Centre on the Main Campus of HKU. This new Cultural Centre houses an auditorium, a studio theatre and an exhibition gallery.



**The Yuet Ming Auditorium** holding up to 400 seats, is a modern and well-equipped proscenium theatre, which is designed for drama, dance, band show and screening.

**Studio 303** with a capacity of 140 seats, is an ideal performing venue for experimental performances in a variety of art forms, such as drama, dance, musical performance and theatrical workshop.

**Exhibition Gallery**, located on the 5/F of CYMCC with 134 sq. m. of exhibition area, is an ideal place for student artwork exhibition.

Email: [cymcc@hku.hk](mailto:cymcc@hku.hk)

Website: [cedars.hku.hk/campuslife/cymcc](http://cedars.hku.hk/campuslife/cymcc)

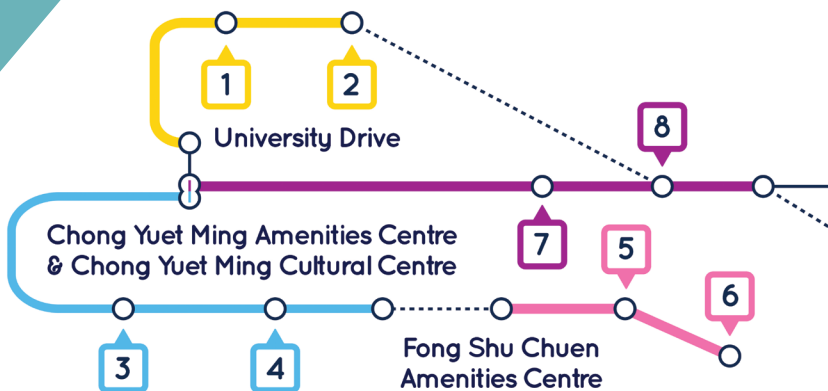




## Catering

There are many restaurants serving different kinds of cuisines near the Main Campus and Centennial Campus.

Website: [cedars.hku.hk/catering](http://cedars.hku.hk/catering)



### 1. Robert Black College Dining Room

- Robert Black College, University Drive
- Chinese or Western set meal (table-served)

### 2. Rome Café

- Level P3, Graduate House, The Jockey Club Building, No.3 University Drive
- Western cuisine (table-served)

### 3. Maxim's FOOD<sup>2</sup>

- 4/F, Chong Yuet Ming Cultural Centre
- Local fast food and Asian food

### 4. Café 330

- 2/F, Chong Yuet Ming Amenities Centre
- Western Deli, snacks and beverages

### 5. Fong Shu Chuen Amenities Centre Restaurant

- 2/F, Fong Shu Chuen Amenities Centre
- Local fast food and Asian Food

### 6. HKU Halal Food Corner (Ebeneezer's Kebabs & Pizzeria)

- 1/F, Fong Shu Chuen Amenities Centre
- Halal Food and beverages

### 7. SUBWAY

- Run Run Shaw Podium
- Submarine sandwiches and beverages

### 8. TWGHs iBakery Express

- Run Run Shaw Podium
- Bakery products and beverages

### 9. Starbucks Coffee

- G/F, Library Building (Old Wing)
- Coffee, pastries, sandwiches and salads

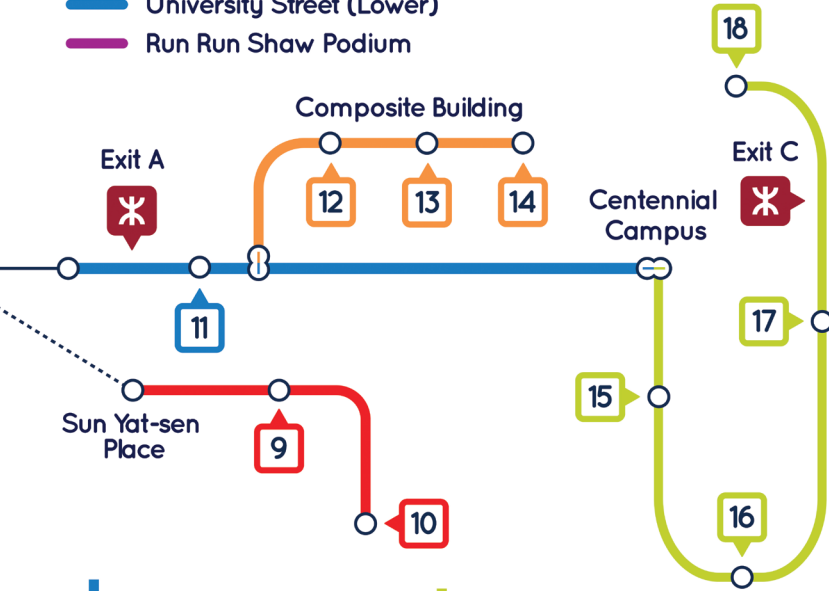
### 10. Mein Bowl

- Main Library Covered Podium
- Noodles and local snacks

# Food Map

## Main Campus and Centennial Campus

— University Street (Lower)  
 — Run Run Shaw Podium



### 11. EAT

- 4/F, Haking Wong Building
- Local fast food and Asian food

### 12. Starbucks Coffee

- G/F, Composite Building
- Coffee, pastries, sandwiches and salads

### 13. TWGHs U-Deli

- G/F, Composite Building
- Lunch boxes and beverages

### 14. U-Sweet

- G/F, Composite Building
- Lunch boxes, snacks and dessert

### 15. OBC Grill

- LG/F, The Jockey Club Tower, Centennial Campus
- Western dishes, burgers and salads

### 16. Delifrance

- G/F, The Jockey Club Tower, Centennial Campus
- Pasta, sandwiches and pastries

### 17. Pan Asian strEAT Food

- G/F, Run Run Shaw Tower, Centennial Campus
- Singaporean, Malaysian and Thai cuisines

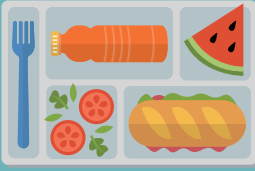
### 18. BIJAS Vegetarian

- G/F, Run Run Shaw Tower, Centennial Campus
- Vegetarian food (Chinese cuisine)

Download Food@HKU app:



Website: [cedars.hku.hk/catering](http://cedars.hku.hk/catering)



## Food Map Sassoon Road Campus and Other Locations



### 19. Social Kitchen - Ho Tim Hall

- Jockey Club Student Village I, 91 Pokfulam Road
- Local and western dishes

### 20. Social Kitchen - Jockey Club Student Village II

- G/F, Suen Chi Sun Hall, Jockey Club Student Village II, 109 Pokfulam Road
- Local and western dishes

### 21. Social Kitchen - Bay View

- LG/F, 6 Sassoon Road
- Local and western dishes

### 22. SUBWAY

- Fan Pui Garden, LG/F, William M.W. Mong Block, 21 Sassoon Road
- Submarine sandwiches and beverages

### 23. 1887

- 7/F, William M.W. Mong Block, 21 Sassoon Road
- Western and Asian cuisines

### 24. Dockside Restaurant

- L2, Block A, Phase 4, Cyberport, 100 Cyberport Road
- Local and Asian cuisines

### 25. Stanley Ho Sports Centre Kiosk

- 10 Sha Wan Drive, Stanley Ho Sports Centre
- Beverage, light bites

Download Food@HKU app:



Website: [cedars.hku.hk/catering](http://cedars.hku.hk/catering)



## Global Lounge

Located on the G/F of Fong Shu Chuen Amenities Centre and open to all HKU students, the Global Lounge provides a venue for all types of interactions, informal gatherings, and multi-cultural and international activities such as cultural nights, exhibitions and concerts to take place. It has offered a unique experience to students and has established itself as a hub of students' social and cultural life at HKU.

Learn more: [www.als.hku.hk/globalounge](http://www.als.hku.hk/globalounge)

## Libraries

The HKU Libraries consist of the Main Library and six specialist branch libraries. The Main Library comprises an all-round collection of materials in arts, humanities, architecture, social sciences, and science and technology. It also has a rich collection of audio-visual materials and reserve materials, as well as the Special Collections which houses a unique selection of Hong Kong materials, rare books, pamphlets, and microforms. Located on the 3/F of the Main Library, Level 3 is a learning commons style facility providing a variety of spaces suitable for different learning styles including reflective self-study as well as collaborative study.

The other six specialist libraries are: Dental Library, Fung Ping Shan Library (the University's Chinese library), Lui Che Woo Law Library, Music Library, Tin Ka Ping Education Library and Yu Chun Keung Medical Library. The Libraries provide photocopiers and laser printers for users to make a copy of documents for the purposes of research, private study, criticism or review.

Learn more: [lib.hku.hk](http://lib.hku.hk)





## Learning Spaces

The Learning Commons is a campus hub equipped with modern learning facilities that encourages and facilitates individual and group study. A variety of spaces are provided for individual and self-paced learning including quiet study areas, reading and lounging areas, and individual workstations. Collaborative learning spaces are provided in the form of group study rooms, more traditionally styled work tables as well as diner booth style places that are well suited to group interactivity.

- Chi Wah Learning Commons: Podium Levels, Centennial Campus
- The Oval: 1/F, Knowles Building
- The Curve: 1/F and 2/F, K.K. Leung Building
- The Lounge: 2/F, the Main Building

Learn more: [www.les.hku.hk/teaching-learning/learning-space](http://www.les.hku.hk/teaching-learning/learning-space)

## Information Technology Services (ITS)

Information Technology Services (ITS) provides comprehensive information technology services to support learning, teaching, research and administration to members of the University. Students may visit ITS Service Desk on the 1/F of Library Building (Old Wing) or send email to [ithelp@hku.hk](mailto:ithelp@hku.hk) for assistance in using the central computing and network services.

Learn more: [its.hku.hk](http://its.hku.hk)







## Daily Life Necessities

HKU offers a wide variety of facilities and services to meet the daily life necessities of students. Some examples are banking, bookstores, supermarket, photocopying services, baby care rooms and postal services, etc.

Please refer to our Main Campus and Sassoon Road Campus maps at the end of this brochure for the locations.

## Student Sports and Recreation

The Centre for Sports and Exercise (CSE) offers a wide range of sports and fitness programmes, including:

- Uni-Sport
- Uni-Adventure
- Exercise is Medicine on Campus

The CSE also manages the following sports facilities:

- Flora Ho Sports Centre, Lindsay Ride Sports Centre and Stanley Smith Swimming Pool on Pokfulam Road
- Stanley Ho Sports Centre, Henry Fok Swimming Pool at Sandy Bay
- 3 Fitness Centres in Lindsay Ride Sports Centre, Henry Fok Health & Fitness Complex and the ACTIVE (Centennial Campus)
- Tennis court at Robert Black College

Learn more: [cse.hku.hk](http://cse.hku.hk)





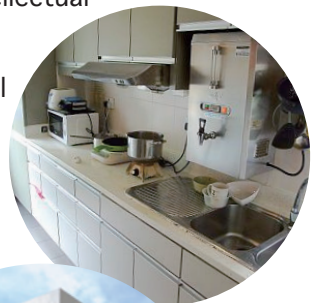
# Student Support and Resources

## Student Housing

At HKU, residential education forms part of the proud tradition of the University. They are part of the education system rather than a mere provision of accommodation. As members of halls and colleges have to learn to be independent and interact closely with students of various backgrounds under the same roof, halls are a community of students seeking social and intellectual enrichment.

HKU has 13 residential halls and 4 residential colleges where students can experience this important part of university life. Each hall has its own tradition, culture and unique characteristics.

Other accommodation options including non-hall housing and off-campus housing are available to suit different lifestyles and budgets of students. More information can be found at [cedars.hku.hk/cl](https://cedars.hku.hk/cl) (Housing).





## Health and Wellness

### University Health Service (UHS)

University Health Service (UHS) has an on-campus clinic providing health and dental care services to students. Primary care service at the UHS is provided by a team of highly qualified and experienced doctors. In general, medical consultation is free of charge, but some investigations and medication are at a cost. A notional charge is also levied for dental treatment and physiotherapy treatment at the University clinic.

For non-local students, please refer to p.35 for information on the fees and charges applicable for specialist care and hospitalisation.

Email: [uhealth@hku.hk](mailto:uhealth@hku.hk)

Website: [www.uhs.hku.hk](http://www.uhs.hku.hk)

### CEDARS-Counselling and Person Enrichment (CoPE)

The CEDARS-Counselling and Person Enrichment (CoPE) is committed to empowering students to develop their social capability and emotional resilience, and also to capitalise on their character strengths, and to live a fulfilling and psychologically healthy life so that they are able to achieve personal success, overcome life challenges and contribute to the community by demonstrating integrity, sensitivity and leadership.

CoPE offers:

- Professional, confidential and free of charge counselling and psychological services
- Semester-based person enrichment programmes

Email: [cedars-cope@hku.hk](mailto:cedars-cope@hku.hk)

Website: [cedars.hku.hk/cope](http://cedars.hku.hk/cope)



## Support for Students with Disabilities and/or Special Educational Needs (SEN)



CEDARS is committed to supporting students with Special Educational Needs (SEN) in overcoming barriers and achieving successful university education. We are the one stop service unit for students with physical and sensory disabilities, learning and developmental disabilities, mental illnesses, chronic medical illnesses, or more than one disabilities.

We provide comprehensive service and support to facilitate students' university adjustment and learning:

- Information on campus facilities
- Loan of learning aids / equipment
- Funding resources
- Internship programmes and employment preparation
- Special examination arrangements
- Peer support
- And more .....

For more details about the SEN service, please contact CEDARS-SEN Support.

Email: [cedars-SEN@hku.hk](mailto:cedars-SEN@hku.hk)

Website: [cedars.hku.hk/cope/sen-support](http://cedars.hku.hk/cope/sen-support)



## Careers and Placement

The CEDARS-Careers and Placement is committed to nurturing students to become global talents possessing professional competencies and entrepreneurial mindset. We serve as a platform with all-round co-curricular programmes and career preparation resources which effectively support and empower students to explore and select suitable career options, acquire essential skills for workplace success, pursue a personally rewarding career and make positive impact to society. Our major services include:

- Career preparation
- Job searching
- Entrepreneurship education and support

Email: [careers@hku.hk](mailto:careers@hku.hk)  
Website: [cedars.hku.hk/cp](http://cedars.hku.hk/cp)

## Language Support



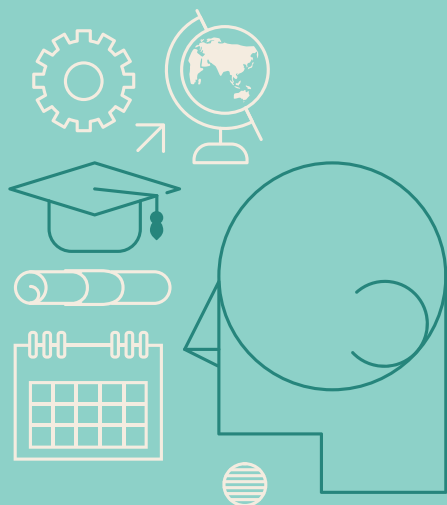
**The School of Modern Languages and Cultures** offers degree and non-degree language courses. More information can be found at [smlc.hku.hk](http://smlc.hku.hk).

**The Centre for Applied English Studies (CAES)** provides English language support through taught courses and self-directed learning opportunities. For more information about the comprehensive services provided by CAES, please refer to [caes.hku.hk/home](http://caes.hku.hk/home).

**The Chinese Language Centre** offers courses in Cantonese, Putonghua (Mandarin), as well as Chinese language and cultural courses for local and non-local students. For more information, please visit [www.chinese.hku.hk](http://www.chinese.hku.hk).

**Individual Peer Tutoring Programmes on Language**, namely the “Survival Cantonese” and the “Peer English Tutoring” are offered to help newcomers better adjust to the learning and social environment at the University and to facilitate greater integration of local and non-local students. For more information, please visit the website of CEDARS-Counselling and Person Enrichment (CoPE) at [cedars.hku.hk/cope](http://cedars.hku.hk/cope).

# Student Life @HKU



## Student Groups and Networks

### **The Hong Kong University Students' Union (HKUSU)**

The HKUSU, the largest student body established on-campus since 1912, is a non-profit organisation and the only official student body serving more than 16,000 students of the University.

Student bodies of HKUSU include campus media and around 130 affiliated student organisations, each with distinctive objectives and functions that cater to the diverse interests of the student population. These student bodies are categorised into five main groups: Faculty and Academic Societies, Hall Students' Associations, Sports Clubs, Cultural Clubs and Independent Clubs.

Learn more: [www.hkusu.org](http://www.hkusu.org)

### **The Postgraduate Student Association (PGSA)**

The PGSA has been serving postgraduate students for more than twenty years. Postgraduate students can make new friends under the welcoming atmosphere from the beginning of the postgraduate journey.

Learn more: [www.pgsa.hku.hk](http://www.pgsa.hku.hk)

A list of student associations, clubs and societies is available at [cedars.hku.hk/campuslife/societiesactivities/associations](http://cedars.hku.hk/campuslife/societiesactivities/associations).

## Support to Student Groups

CEDARS offers support to individual student societies and groups in various ways from time to time. Under the umbrella of Support to Student Groups for a maximum of three years, supported student groups which are not bona fide student societies of the Students' Union, are able to enjoy services including booking of rooms and facilities; advertising through posting various CEDARS' publicity channels; advice on financial management/strategies (not involving any financial transaction); and advice on event management.

Learn more: [cedars.hku.hk/support-to-student-groups](http://cedars.hku.hk/support-to-student-groups)

## iMAP

iMAP is an online social networking platform for the HKU community exclusively. Members can search for private accommodation nearby, look for flatmates and other fellow students by interest, talent, nationality, current location and overseas experience, etc. They can also stay in touch with the rest of the HKU community and share their travel experience while abroad. To register, please visit [cedars.hku.hk/imap](http://cedars.hku.hk/imap).



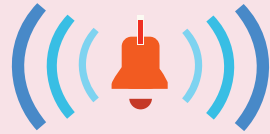
## Induction Activities

At the start of every academic year, Faculties, Departments and other University Offices (e.g. Centre of Development and Resources for Students (CEDARS), University Health Service (UHS), HKU Libraries, etc.) organise induction activities for new HKU students. The Induction Programme series of CEDARS, the Inauguration Ceremony, and the Peer Connect and High Table Dinner are just some of the exciting examples on offer. All these activities are designed to help you integrate with the rest of the University and to cultivate your sense of identity as a member of HKU.

Learn more: [wp2.cedars.hku.hk/fye](http://wp2.cedars.hku.hk/fye)



# Crisis and Emergency



HKU provides physical and mental health services and financial assistance to students who are in urgent need:

## **University Health Service (UHS) Emergency Medical Services**



Address: 2/F and 3/F, Meng Wah Complex  
Mon to Fri: 8:40am – 5pm ; Sat: 8:25am – 12:45pm

**Emergency: (852) 3917 1999**

**Dental Emergencies: (852) 2859 2511**

Email: [uhealth@hku.hk](mailto:uhealth@hku.hk)

Website: [www.uhs.hku.hk](http://www.uhs.hku.hk)

[www.safety.hku.hk/homepage/pdf/RfME.pdf](http://www.safety.hku.hk/homepage/pdf/RfME.pdf)

When the clinic is closed, please go to the nearest Accident and Emergency Department at Queen Mary Hospital, 102 Pokfulam Road, Hong Kong.

## **CEDARS-Counselling and Person Enrichment (CoPE) Counselling Service**

Address: Room 301-323, 3/F, Main Building  
Mon to Thu: 9am – 5:45pm; Fri: 9am – 6pm; Sat: 9am – 1pm

**To make an appointment, please call (852) 3917 8388 or email [cedars-cope@hku.hk](mailto:cedars-cope@hku.hk) or visit Room 301-323, 3/F, Main Building.**

Website: [cedars.hku.hk/cope](http://cedars.hku.hk/cope)

During after-office hours, please go to the nearest medical doctor or Accident and Emergency Department at the hospital for immediate support.







### **CEDARS–Campus Life**

#### **University Financial Assistance – Emergency Assistance**

Address: 3/F, Meng Wah Complex

Mon to Thu: 9am – 5:45pm; Fri: 9am – 6pm; Sat: 9am – 1pm

**To make an appointment, please call (852) 3917 2305.**

Website: [cedars.hku.hk/campuslife/finances/ufa-emergency-assistance](https://cedars.hku.hk/campuslife/finances/ufa-emergency-assistance)

### **Estates Office**

#### **24-hour Security Control Centre**

Address: Room 310, 3/F, Pao Siu Loong Building

Tel: (852) 3917 2882

Email: [security@estates.hku.hk](mailto:security@estates.hku.hk)

Website: [www.safety.hku.hk/homepage/pdf/EP.pdf](http://www.safety.hku.hk/homepage/pdf/EP.pdf)

You may also find  
the following useful:



- + Lost and Found Tel:  
(852) 3917 2883
- + Pandemic and Influenza:  
[www.uhs.hku.hk/pandemic](http://www.uhs.hku.hk/pandemic)



## Insurance Coverage

The University has a standard insurance coverage for students. Information on the insurance coverage can be found in the undergraduate and postgraduate handbooks. For details on the insurance coverage, please contact the Finance and Enterprises Office through email at [feo\\_insurance@hku.hk](mailto:feo_insurance@hku.hk).

You should note that the University would only provide standard travel insurance coverage, and would not insure any personal cash or property of students in any circumstances. If additional or special insurance cover is required, it is entirely up to the student concerned to make personal arrangement at your own expense.

## Emergency Assistance Outside Hong Kong

Travelling outside Hong Kong (including exchange programmes, overseas internships, career learning trips, service learning, competitions, academic activities, etc.) may involve some potential health and safety risk. HKU has a range of resources and information available to support you in planning a trip and coping with a crisis outside Hong Kong. The one-stop “*Crisis and Emergency Outside Hong Kong*” webpage ([cedars.hku.hk/overseasemergencyassistance](http://cedars.hku.hk/overseasemergencyassistance)) brings together information and support services available at the University such as insurance coverage and arrangement, engagement of the International SOS for provision of general assistance, local information and travel advice, key contact information of the University and Consulates, reminders before departure, and other useful tips and precautions.

# Information for Non-local Students

CEDARS as a whole provides a range of support services to non-local students and CEDARS-Campus Life is your first contact. We offer you specific support upon admission into HKU.



## Campus Life Support

- We provide information and assistance on non-academic matters
- We give assistance and guidance on:
  - Visa and immigration formalities
  - Housing services
  - Orientation programmes (Weeks of Welcome)
  - Settling-in support
  - Social and networking opportunities

## Why talk to us?



- We are experienced in helping students
- We understand the university system
- We have knowledge of issues affecting non-local students
- All discussions are confidential
- We can refer you to other services, if necessary

## CEDARS – Campus Life

Address: 3/F, Meng Wah Complex  
Email: [cedars@hku.hk](mailto:cedars@hku.hk)  
Website: [cedars.hku.hk/wow](http://cedars.hku.hk/wow)





## Visa Matters

### Who should apply for a student visa?

Generally speaking, if you wish to study in Hong Kong and you do not have the right of abode or right to land in Hong Kong, you need to apply for a student visa / entry permit to Hong Kong.

### When to apply?

You should proceed with your student visa application as soon as you receive a conditional / confirmed offer of admission.

### Visa sponsor office

For all international students (except summer programme participants) and Mainland research students, please contact Centre of Development and Resources for Students (CEDARS).

Website: [cedars.hku.hk/wow](http://cedars.hku.hk/wow) (Visa)

Email: [cedars@hku.hk](mailto:cedars@hku.hk)

For exchange students, undergraduates and taught postgraduates from the Mainland, please contact China Affairs Office (CAO).

Website: [cao.aal.hku.hk/student-visa](http://cao.aal.hku.hk/student-visa)

Email: [visaapp@hku.hk](mailto:visaapp@hku.hk)

Please refer to the website of your respective visa sponsor office for detailed information on visa application procedure.

## Family Matters



### Should I bring along my own family?

Before making a decision whether or not to bring your family to Hong Kong, it is important to consider the following issues:

- The airfare expenses for your family to and from Hong Kong
- Additional accommodation expenses as you may need to rent a larger flat
- Extra cost for food, clothing and other necessities
- Restricted employment opportunities for your spouse
- Provision of child care facilities
- Whether your children will adjust well to schools in Hong Kong
- English-speaking schools are mostly privately run and expensive
- The impact on you and your studies if your family is not happy in Hong Kong
- Whether you will come to Hong Kong first and arrange things for your family, or bring your family to Hong Kong together with you

## Financial Matters



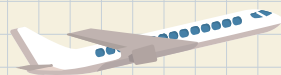
### How can I transfer money to Hong Kong for use on arrival if I do not have a bank account in Hong Kong?

This can be done, either

- by instructing an overseas bank one to two weeks prior to your departure. Arrange to send money in your name to a bank in Hong Kong (both HSBC and the Bank of East Asia have branches on the HKU campus); or
- by carrying traveller's cheques or bank drafts for deposit into a local account (personal cheques can also be deposited but may take up to three weeks to be cleared).

### How much money should I bring to Hong Kong?

There are usually significant extra expenses in the first month of your stay, such as rental charges, household items and textbooks. On top of the tuition fees, expenses for the first month can amount to HK\$10,000 or more for a student. It is important to have a realistic idea of the amount of money you will need and plan accordingly.



You are advised to bring enough cash, traveller's cheques, or bank drafts to cover expenses of at least your first month. Do not, however, carry too much cash at any time.

You can obtain a bank draft or transfer money to a bank account in Hong Kong through your local bank. Keep in mind that it may take some time to cash a bank draft with a large amount of money. Money transfers should be arranged well before your departure.

The official currency of Hong Kong is Hong Kong Dollar (HK\$). You can exchange Hong Kong Dollar with foreign currency or traveller's cheques according to the daily exchange rates at any banks or money exchange shops in Hong Kong.

### **Will I have access to banks and automated teller machines (ATM) on campus?**

There are two banks and ATMs located on campus:

HSBC branch + ATMs (Tel: (852) 2233 3000)

The Bank of East Asia branch + ATMs (Tel: (852) 3609 1812)

Bank of China branch (ATM only)

Check their locations at [www.maps.hku.hk](http://www.maps.hku.hk).

### **Can I take up part-time employment and summer jobs?**

Under the existing immigration regulations, non-local students in full-time full-degree programmes are allowed to work at the designated operators on the HKU campus for up to 20 hours per week during term time. They can also work full-time during the summer months within the currency of their limit of stay while they remain as a student at HKU. For details, please visit [cedars.hku.hk/wow](http://cedars.hku.hk/wow) (Visa).

While some students can earn extra money from part-time and vacation work, availability of suitable jobs is not guaranteed. It is not advisable to plan your budget expecting to find work for the maximum allowable hours.



## Medical Care

### **How do I access to specialist care or hospitalisation?**

When specialist care or hospitalisation are required, you can consider using the services provided at public clinics and general wards of government hospitals. The charge for those holding a Hong Kong Identity Card (HKID Card) is subsidised. Non-local students without a HKID Card are required to pay full fees for services and hospitalisation in government hospitals.

For details of the fees charged by government hospitals, please visit [www.ha.org.hk](http://www.ha.org.hk) (Services Guides → Fees and Charges).

## Insurance Coverage

### **Do I need to get my own medical insurance?**

Non-local students who are going to spend more than 180 days in Hong Kong are eligible to apply for a Hong Kong Identity Card (HKID Card). As it takes time to obtain the HKID Card, you are strongly advised to get your own medical insurance to cover your first month of stay. Visiting students staying at HKU for less than 6 months are strongly recommended to purchase private medical and hospital insurance to cover the whole period of your stay in Hong Kong. If you plan to travel around Asia, you are advised to purchase medical insurance that cover all the countries that you plan to visit as well.

Many insurance policies are strictly on a reimbursement basis. Non-local students, even with insurance coverage, may have to settle the medical bill first before you can claim reimbursement. It is important for you to check carefully with your insurance company on the extent of coverage and claim procedures, and set aside a sum of money for contingencies.



## Weeks of Welcome (WoW)

### What kinds of induction activities are available?

A series of induction activities for newly arrived non-local students are available. The activities, which are a mixture of fun, fact finding, visits and tours, aim to help the newly arrived to settle down, induct into the local way, enhance cross cultural experience and sharing, as well as explore new environment and people. Local students will serve as student hosts to lead these activities and introduce HKU and Hong Kong to new students.



Learn more: [cedars.hku.hk/wow](http://cedars.hku.hk/wow)

## Non-local Students under the age of 18

### What information do I need to know if I am under 18?

#### 1. Student visa application

Your parent needs to nominate a local Hong Kong resident to be your guardian when applying for a student visa. Details of the guardian and nomination form should be attached to your visa application set. Please consult the office of your student visa sponsor (see p.32) if you have further enquiries.

#### 2. Hong Kong Identity Card

If your parents have nominated a relative to be your local guardian to the Hong Kong Immigration Department, you should be accompanied by that local guardian when you submit your Hong Kong Identity Card application at the Hong Kong Immigration Department.

If your parents have nominated “The University of Hong Kong” to be your local guardian, you can just submit your application to the Hong Kong Immigration Department on your own. You will be asked to fill in a declaration form there.





# Campus Maps

## Sassoon Road Campus Map



Some Departments at miscellaneous hospitals not shown

# Main Campus Map




Sai Ying Pun Post Office, 27 Pokfulam Road


se



 ATM Centre

 Baby Care Room

 Bank

 Bookstore

 CEDARS Office

 Filtered Water

 Photocopying

 Posting Box

 Supermarket & Convenience Store





*cedars*

Centre of Development and Resources for Students  
The University of Hong Kong  
香港大學學生發展及資源中心